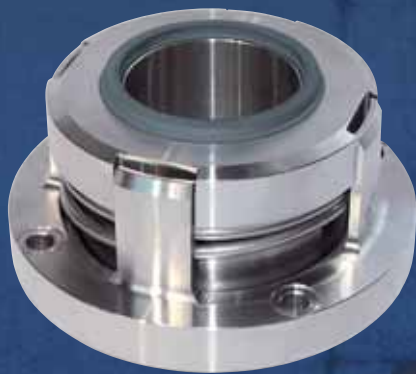


# Mechanical seals for **PROPELLER SHAFTS**



Specific applications for boats and ships wherever reliable customised products are required.

Replacing stuffing boxes with mechanical seals eliminates wear on the propeller shaft, thus increasing efficiency.

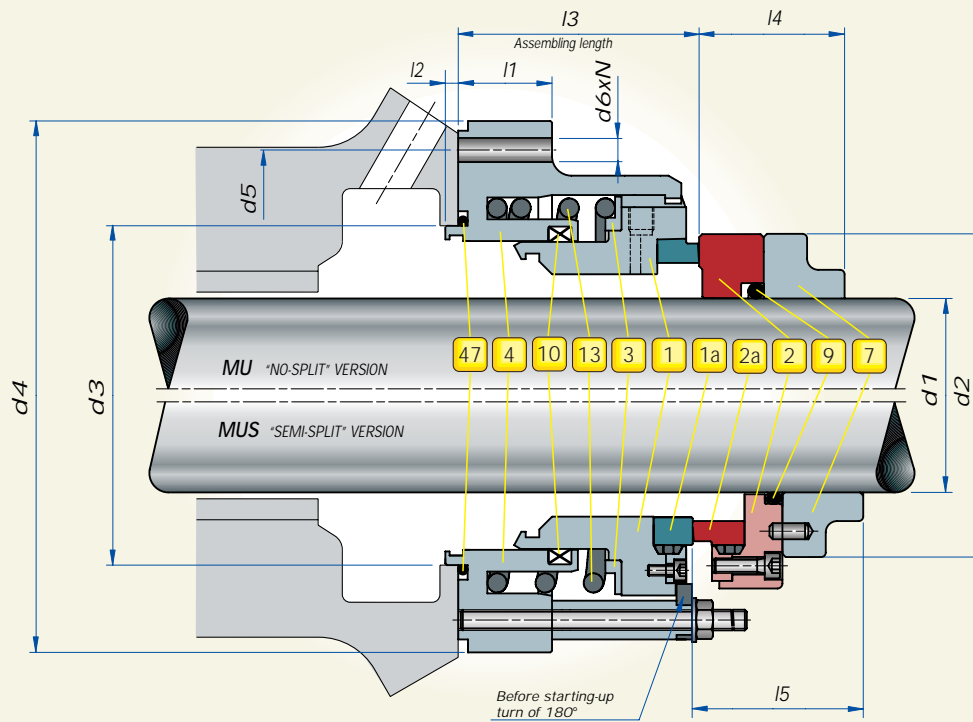
Fluiten have vast experience in all aspects of technical design, and the production of mechanical seals for propeller shafts.

The seals are designed to tolerate shaft movement. No dry docking is required for maintenance.

Fluitens dedication to design and production ensures the most cost effective solution to a wide range of mechanical seals.

• Mechanical seal MU/MUS

• Mechanical seal MMS



d1	d2	d3	d4	d5	d6xN	l1	l2	l3 +/-0,5	l4	l5	Running
040-047	84	85	135	120	8,5x4	21	4	67	40	45	+10 / -8,5
048-054	84	85	135	120	8,5x4	21	4	67	40	45	+10 / -8,5
055-064	107	105	159	144	8,5x4	29	4	74,5	45	50	+10 / -8,5
065-074	107	105	159	144	8,5x4	29	4	74,5	45	50	+10 / -8,5
075-087	140	115	175	162	8,5x4	33	4	93,5	59	70	+10 / -8,5
088-095	140	115	175	162	8,5x4	33	4	93,5	59	70	+10 / -8,5

Dimensions subject to modifications without notice.  
Note: for inch dimensions please call our Technical Sales Office.

### ELEMENTS:

- 1** STATIONARY SEAT
- 1a** STATIONARY SEAT INSERT
- 2** ROTARY FACE
- 2a** ROTARY FACE INSERT
- 4** SEAL BODY
- 7** DRIVE RING
- 9** ROTARY FACE GASKET
- 10** STATIONARY SEAT GASKET
- 13** SPRING
- 47** SEAL BODY GASKET

### OPERATING LIMITS:

DIAMETER: (mm)	SPEED: (m/sec)	PRESSURE: (bar g)	TEMPERATURE: (°C)
095	10	2,5	+80
40	0	0	-5

### CHARACTERISTICS:

- SMALL/MEDIUM PROPELLER SHAFTS
- RESISTANT **HIGH** SHAFT AXIAL MOVIMENT
- NO CATASTROPHIC FAILURES
- BI-DIRECTIONAL
- SPECIAL MATERIALS ANTI-CORROSION

#### STANDARD MATERIAL TABLE MU

<b>2</b>	<b>1</b>	<b>9</b>	<b>10</b>	<b>47</b>	<b>13</b>	<b>4</b>	<b>3</b>	<b>7</b>
Y1	Z32	G	E	B6				

#### STANDARD MATERIAL TABLE MUS

<b>2a</b>	<b>1a</b>	<b>9</b>	<b>10</b>	<b>47</b>	<b>13</b>	<b>4</b>	<b>3</b>	<b>1</b>	<b>2</b>	<b>7</b>
Z31	U41	G	E	B6						

#### Materials:

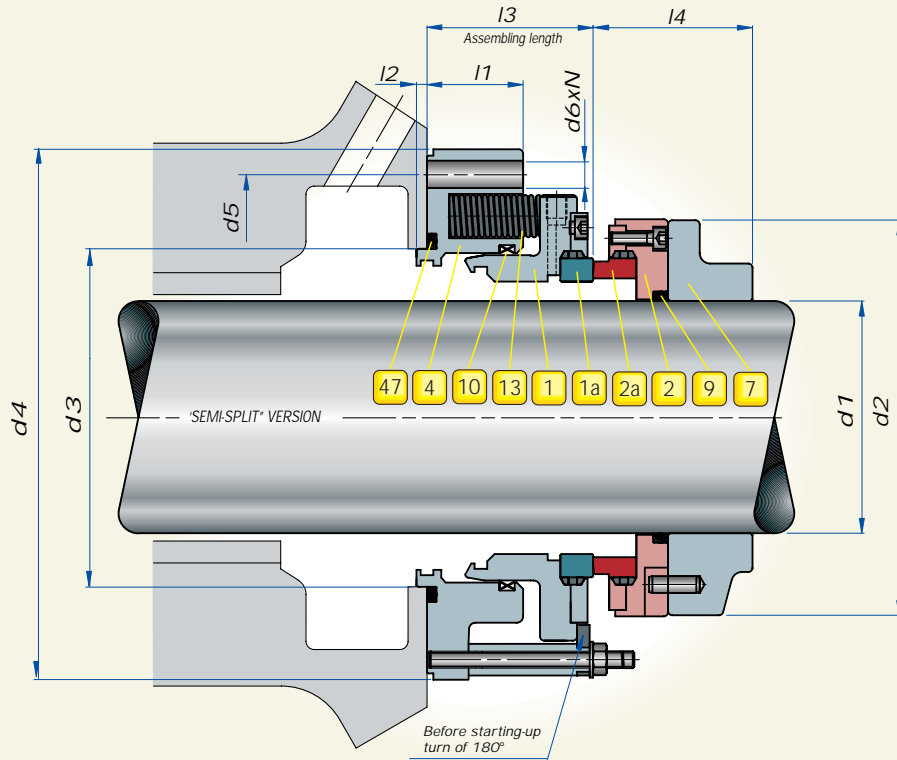
- Y1: Cr-Mo Steel
- Z32: AISI 316+Graphite resins impregnated
- Z31: Graphite resins impreg.
- U41: Silicon carbide
- V: Viton
- G: Nitrile rubber
- N: Neoprene
- E: AISI 316
- B6: Marine brass

#### Example:

To order the seals shown on this page, no split version, for shaft 55 mm and standard material, the code will be: **MU055 - Y1Z32GEB6**

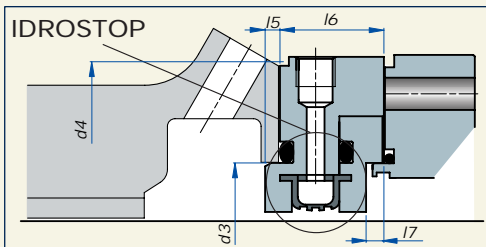


# MECHANICAL SEAL MMS



## ELEMENTS:

- 1** STATIONARY SEAT
- 1a** STATIONARY SEAT INSERT
- 2** ROTARY FACE
- 2a** ROTARY FACE INSERT
- 4** SEAL BODY
- 7** DRIVE RING
- 9** ROTARY FACE GASKET
- 10** STATIONARY SEAT GASKET
- 13** SPRING
- 47** SEAL BODY GASKET



### STANDARD MATERIAL TABLE

<b>2a</b>	<b>1a</b>	<b>9</b>	<b>10</b>	<b>47</b>	<b>13</b>	<b>4</b>	<b>7</b>	<b>2</b>	<b>1</b>
Z31	U41	G	E	B6	B3				

### Legenda materiali:

Z31: Graphite resins impreg.  
 U41: Silicon carbide  
 V: Viton  
 G: Nitrile rubber  
 N: Neoprene  
 E: AISI 316  
 B6: Marine brass  
 B3: Bronze

### Example:

To order the seals shown on this page for shaft 260 mm and standard material, the code will be:  
**MMS260 - Z31U41GEB6**

d1	d2	d3	d4	d5	d6xN	l1	l2	l3	l4	l5	l6	l7	Running
100-112	187	160	248	229	11x8	45	5	79	75,5	5	35	6	+6 / -4
113-124	187	160	248	229	11x8	45	5	79	75,5	5	35	6	+6 / -4
125-137	241	185	285	260	13x8	45,5	5	78	119	5	35	6	+6 / -4
138-149	241	185	285	260	13x8	45,5	5	78	119	5	35	6	+6 / -4
150-162	266	210	310	285	13x8	45,5	5	78	119	5	52,5	6,5	+6 / -4
163-174	266	210	310	285	13x8	45,5	5	78	119	5	52,5	6,5	+6 / -4
175-187	306	250	360	330	17x8	45,5	5	78	140	5	52,5	6,5	+6 / -4
188-199	306	250	360	330	17x8	45,5	5	78	140	5	52,5	6,5	+6 / -4
200-214	350	290	410	380	17x8	54	6	95	146	6	52,5	8	+6 / -4
215-229	350	290	410	380	17x8	54	6	95	146	6	52,5	8	+6 / -4
230-244	380	320	440	410	17x8	54	6	95	146	6	59,5	8	+6 / -4
245-259	380	320	440	410	17x8	54	6	95	146	6	59,5	8	+6 / -4
260-279	425	370	515	475	21x8	62	8	115	175	8	59,5	10	+6 / -4
280-300	425	370	515	475	21x8	62	8	115	175	8	59,5	10	+6 / -4

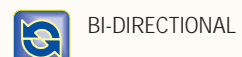
Dimensions subject to modifications without notice.

Note: for inch dimensions please call our Technical Sales Office.

## OPERATING LIMITS:

DIAMETER: (mm)	SPEED: (m/sec)	PRESSURE (bar g)	TEMPERATURE: (°C)
300	10	2,5	+80
100	0	0	-5

## CARATTERISTICHE:



Some our applications:

ISA YACHTS  
MY AXIOMA



FERRETTI YACHTS  
Ferretti 630



DALLA PIETA' YACHTS  
DP58' HT



CANTIERE NAUTICO CROSERA  
Trawler



CANTIERE CRN SPA  
MARACUNDA



INTERMARINE SPA  
Patrol boat - Guardia di Finanza  
(Italian Custom Police)



CANTIERE NAVALE VITTORIA  
CP800 SAR - Coast Guard



*A strong link of your system*

FLUITEN ITALIA SpA

20016 PERO (Milano) • Via L. da Vinci, 14 • Tel. +39 02.339403.1 Fax +39 02.3538641  
E-mail: info@fluiten.it • www.fluiten.it